



If you are interested in learning more about St Edmunds Society or would like a tour to discover our courses then please contact us on the details below. We look forward to meeting you.

114-118 Oak Street, Norwich, Norfolk, NR3 3BP.

01603 622035

post16@st-eds.org.uk

 @StEdsSociety  @EdmundsSociety  @StEdmundsSociety

www.st-eds.org.uk



YOUR WAY

ST-EDS
Employability skills for young people

PROSPECTUS

"I just wanted to say a big thank you to all the staff and tutors at St Eds for the positive support and training they have given to the students. Having the chance to study a trade has given my son a focus that he didn't have at school and possibly a career path to follow. It's had a really positive effect on his outlook and opened up opportunities for the future."

PARENT OF A POST-16 STUDENT



Welcome

St Eds' philosophy is to deliver an employer-led curriculum, truly enabling our students both to believe in themselves and to become the highly skilled workforce of tomorrow.

We provide students with the skills necessary to meet the real requirements of employers through applying the theory of the classroom to the real world whilst ensuring students gain insight and access to employers and projects.

Regards,
Lorraine Bliss MBE, CEO

OUR KEY OBJECTIVES:

- › Improve the work and life chances of all students.
- › Encourage the development of meaningful, lifelong trade specific skills that will open doors to wider opportunities and sustainable job prospects.
- › Engage and keep students safe with stringent safeguarding procedures.
- › Ensure all young people have the opportunity to discover their career pathway through vocational education.
- › Work in partnership with national employers to ensure industry endorsement is at the centre of all qualifications.



“St Edmunds Society provides hope to young people that they can overcome whatever barriers they face and realise their potential in a world that has not always valued them.”

CLLR DAVID FULLMAN – CHAIR OF TRUSTEES AND FORMER LORD MAYOR OF NORWICH.

Our Vision

St Eds takes learning out of the classroom, embedding practical and academic skills across several vocational sectors.

We have outstanding links with national employers, plus excellent support from many local partners.

Our curriculum is designed in consultation with employers to meet industry standards.

BESPOKE PACKAGE

All our students have an interview before they join us, so that we are able to create an individual learning plan tailored to each student. We are able to personalise a timetable to suit their needs, as well as establish any additional support which may be required.

We will create a bespoke package, which enables the student to work towards a level of qualification consistent with their circumstances and abilities.

BENEFITS:

- › Access to a dedicated and committed team of tutors and staff.
- › Gain employability and life skills.
- › Become highly-skilled in a vocational area.
- › Qualified pastoral support to assess and remove barriers to learning.
- › Gain a work experience placement and site visits.
- › Support with English and Maths throughout your studies.





“I’ve seen first hand the amazing job St Eds does delivering good, solid industry relevant training to our young people here in Norwich and surrounding areas. Just as importantly I’ve seen it give many students a sense of self-worth, confidence and purpose where sometimes that was lacking before. It’s an amazing transformation to watch.”

CLIVE LEWIS – MP FOR NORWICH SOUTH



Our Students

Our provision is targeted at young people aged 11-18 (up to 25 with an Education, Health and Care Plan (EHCP).

Our students come to us for many reasons. We support young people who:

- Have additional support needs.
- Have an Education, Health and Care Plan (EHCP).
- Would benefit from smaller class sizes.
- Prefer practical learning.
- Want to gain further education or training.
- Have been out of mainstream education.
- Are not able to access the curriculum due to behaviour, illness or personal circumstances.
- Need specialist support with social, emotional and mental health difficulties.

SCHOOL PROVISION:

We are able to offer courses to students in Secondary School. They can complete a taster course and will receive an in-house certificate.

We also offer qualifications, where students can gain an Award, Certificate or Diploma. There can be some age restrictions for students wanting to achieve a qualification, please enquire for more information.

HOW WILL WE HELP?

- Support from our welfare team.
- Improve school attendance.
- Guidance that meets the needs of the individual students.
- Understand and help improve hard to manage behaviours.
- Address social, mental, emotional and physical needs.
- Build and maintain an atmosphere in which students feel secure, encouraged in their learning, valued and safe.



“St Eds have been fantastic in helping many of the young people I work with, helping build their confidence levels and progress their education in a friendly and highly supportive environment”.

JAMIE ROBSON – NORFOLK COUNTY COUNCIL

Welfare Support

Our Welfare Support Team has multiple specialisms in Special Education Needs and Disabilities (SEND), Social, Emotional and Mental Health (SEMH), counselling, mentoring and behaviour management. This service offers holistic support to address disengagement in mainstream education and the personal circumstances which have presented as barriers to learning.

For many years we have been offering support and opportunities for young people. During that time, we have built on our own experiences and provided a complete wrap around package of emotional and welfare support for young people. This has enabled them to begin to specify their goals and achieve their potential, by improving confidence in their own ability, leading to positive outcomes in education and throughout life.

WE CAN OFFER:

- Provision which is open to students of all backgrounds.
- A behaviour management system.
- Strong input into social and emotional development.
- Flexibility to progress and reintegrate students back into mainstream provision.
- A multi-agency approach to support.
- Roll on and roll off programmes.
- A designated keyworker.
- Student support plans.
- Onsite welfare drop in service.
- Support with social, mental, emotional and physical needs.
- Support for the whole family to bridge communication between the young person and their parent/carer.
- Trauma Informed Practice.

Student Outreach

As per our extensive experience, we offer family support to parents, carers and schools struggling with a young person's needs.

Supported by an experienced and qualified social worker and a highly experienced team, our Outreach Support is a pastoral outreach service like no other in the region, which can support parents, carers and schools struggling to understand how best to manage and improve the negative behaviours often displayed by students.

WE CAN HELP IF YOUR CHILD IS:

- Putting their school placement at risk through negative behaviour.
- Struggling with emotional difficulties.
- Suffering from low self-esteem or low self-confidence.
- Displaying risk-taking behaviours.
- In family breakdown.
- Refusing or struggling to engage with professional support.



Careers Advice

Many young people do not get the Careers Information, Advice and Guidance (CIAG) they need to make progress towards their chosen career path.

Our CIAG staff are qualified to support young people, identifying available opportunities for further training and employment.

St Eds organise employability days and careers events with our corporate partners to enhance student experience. We are also a Matrix Accredited provider for Information, Advice and Guidance Services.



Our team are striving to meet the eight Gatsby Benchmarks to provide and deliver:

- 1 A stable careers programme.
- 2 Up-to-date occupational and labour market information.
- 3 Bespoke action plans which address and meet an individuals needs.
- 4 A strong link between curriculum based learning and careers.
- 5 A diverse range of encounters with employers and employees.
- 6 Experiences of workplaces.
- 7 Encounters with further and higher education providers.
- 8 Personal guidance.



St Eds are partnered with Qube Learning, as part of our mission to create more opportunities for our students.

Qube Learning is a Grade 2 Ofsted training provider with over 20 years experience specialising in vocational qualifications, core skills and short courses.

Qube work with hundreds of employers across the country delivering a range of training and qualifications to a multitude of learners across a wide range of industries.

Qube fit with St Eds' ethos through their flexible approach to ensure both learner and employer remain the focus of any programme.

Qube's aim is to support the transformation of the economy by providing individuals with new skills and employment opportunities.

This partnership with Qube Learning is a positive way to share resources and work together to achieve the best outcomes for our students.





Our Study Programmes

St Eds work in partnership with Skills Training UK (STUK) to deliver study programmes for 16-18 year olds (up to 25 years with an EHCP) in Norfolk. St Eds offers a range of flexible full-time and part-time vocational study programmes.

WHO ARE STUK?

STUK are a national training provider with a proven track record in working with major employers to upskill their existing workforce and train their new recruits. STUK are a Prime Contractor to the Education and Skills Funding Agency with a Grade 2 Ofsted rating.



IS A STUDY PROGRAMME FOR ME?

If you are a student looking to progress onto a traineeship or apprenticeship and need some support with Maths and English along the way, our study programme can help you access useful work experience offered by industry experts to gain opportunities and to help you realise your potential.

THE STUDY PROGRAMME INVOLVES:

- English and Maths qualifications (GCSE/Functional Skills) if not already held.
- A high quality, sector specific work placement.
- Training endorsed by industry professionals.
- Gaining an industry recognised qualification from an accredited Awarding Body.

POST-16 TEAM:

The Post-16 team oversee the entire process of a Study Programme. This includes: Interviews and Student Recruitment, Bursary Applications, Attendance Support, Quality Assurance of qualifications, Careers Advice and Next Steps guidance.

How to Apply...



Visit our website and check out our courses
www.st-eds.org.uk

Contact us via phone
01603 622035 or email
post16@st-eds.org.uk

Visit us for a tour of our centre and fill in an application form

Interview with Post-16 team – discuss your application, establish your interest in the subject and ask any questions

Receive an offer letter for your place

Induction – get to know our centre

Start your journey



Our Courses

Construction Skills

Hospitality and Catering

Hair and Beauty Skills

Health and Social Care

Automotive Maintenance



ENTRY REQUIREMENTS:

Level 1 is suitable for 14-18 year olds (or up to 25 with an EHCP). Level 2 is suitable for 16-18 year olds (or up to 25 with an EHCP).

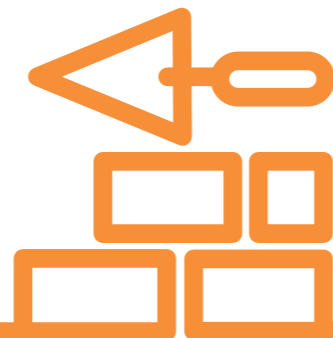
No recommended prior learning or experience is required for Level 1. To take the Level 2 course, you will ideally hold a Level 1 qualification.

Aged 16+ will be supported to achieve maths and English qualifications whilst on the programme (if you have not achieved A-C or 9-4 grade GCSE).

Aged 16+ will be placed within relevant work experience with local employers whilst on the programme.

City & Guilds
LEVEL 1

Construction Skills



These courses will provide you with an introduction to the skills and tools required to become a labourer.

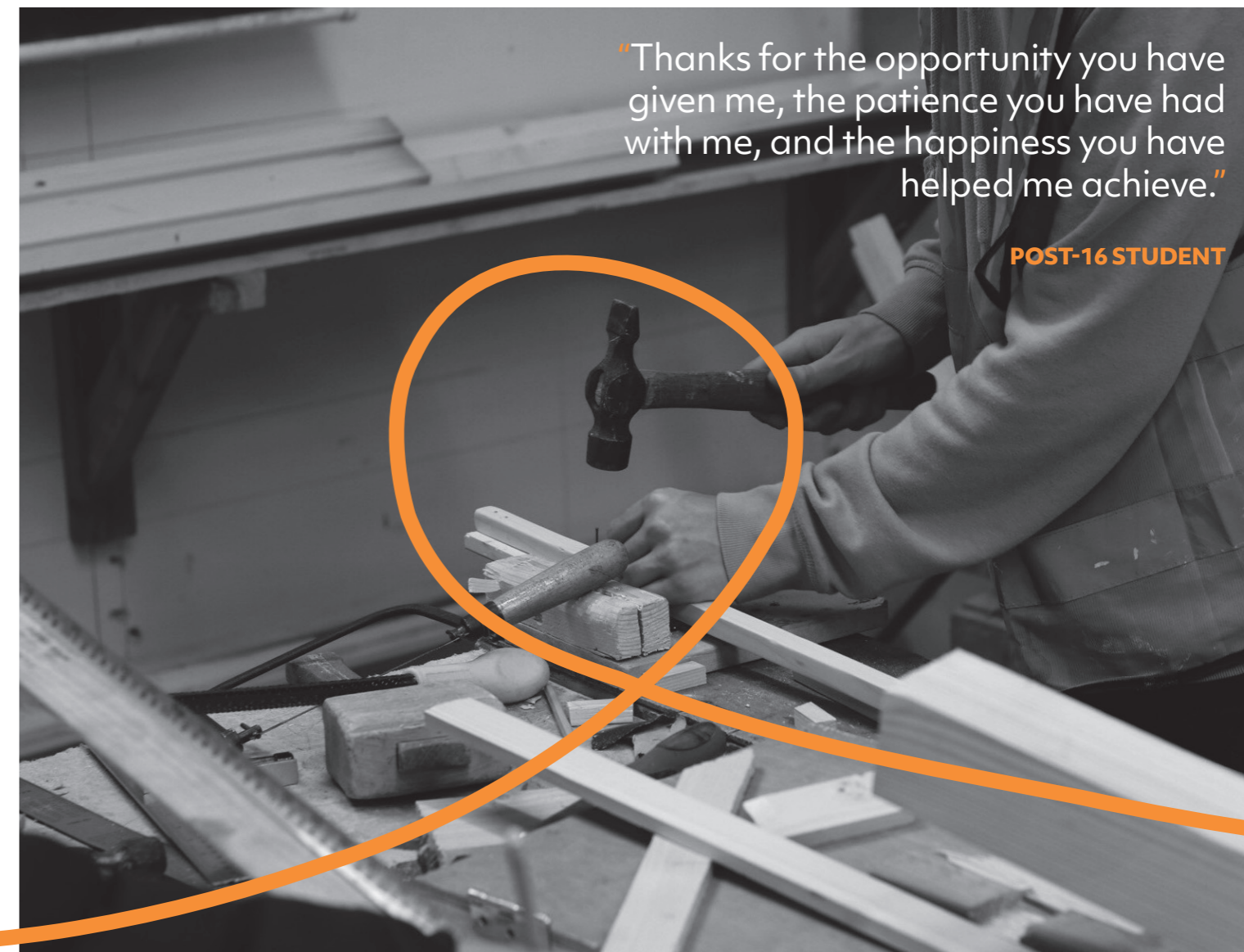
We run several qualifications across both Level 1 and Level 2 in Construction, all accredited by City and Guilds.

Please contact us about other courses and levels if you are interested.



We run Multi-Skilled courses which provide a foundation knowledge in all of the below areas, as well as trade-specific courses in some of these areas.

- › Bricklaying.
- › Carpentry and joinery.
- › Painting and decorating.
- › Wall and floor tiling.
- › Plumbing.
- › Plastering and dry lining.
- › Roofing.
- › Electrics.



"Thanks for the opportunity you have given me, the patience you have had with me, and the happiness you have helped me achieve."

POST-16 STUDENT

WHERE WILL IT TAKE ME?

You can progress onto further training in specific trade areas (e.g. Level 2 Carpentry, Painting & Decorating, Bricklaying) or a traineeship/apprenticeship within Construction.

We have strong industry links with many local and national construction companies, including Taylor Wimpey, Persimmon Homes and Pentaco.

HEALTH AND SAFETY IN A CONSTRUCTION ENVIRONMENT (CSCS)

We also run a short extension course for students aged 16+ wanting to start a career on a building site and be handed a CSCS card. This is an extension for those who are excelling in their course.

The qualification covers:

- › Principles of risk assessment for maintaining and improving H&S at work.
- › The importance of safe manual handling in the workplace.
- › The importance of working safely at height in the workplace.
- › Risks to health within a construction environment.
- › The importance of working around plant and equipment safely.

ENTRY REQUIREMENTS:

This course is suitable for 14-18 year olds (or up to 25 with an EHCP).

No recommended prior learning or experience is required for Level 1.

Aged 16+ will be supported to achieve maths and English qualifications whilst on the programme (if you have not achieved A-C or 9-4 grade GCSE).

Aged 16+ will be placed within relevant work experience with local employers whilst on programme.

ENTRY REQUIREMENTS:

Level 1 and Level 2 are suitable for 14-18 year olds (or up to 25 with an EHCP).

No recommended prior learning or experience is required for Level 1. To take the Level 2 course, you will ideally hold a Level 1 qualification.

Aged 16+ will be supported to achieve maths and English qualifications whilst on the programme (if you have not achieved A-C or 9-4 grade GCSE).

Aged 16+ will be placed within relevant work experience with local employers whilst on programme.



LEVEL 1

Introduction to the Hospitality Industry



This course is suitable for a young person wanting to start a career in a Catering or Hospitality environment, including a Chef, Kitchen Assistant, Bar Staff or Waiter/Waitress.

The following will be covered during the course:

- Customer service.
- Serving food and drink.
- Healthy eating.
- Using kitchen equipment.
- Basic food preparation.

WHERE WILL IT TAKE ME?

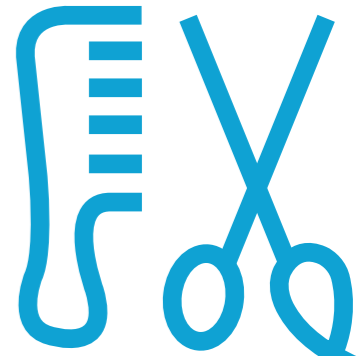
You can progress onto further training in specific trade areas (e.g. Level 2 Catering and Hospitality) or a traineeship/apprenticeship within the Hospitality and Catering industry.

Please contact us about other courses and levels if you are interested.



LEVEL 1 AND 2

Hair and Beauty Skills



LEVEL 1

Students will be introduced to a range of practical skills from across the industry, whilst developing their personal and social skills.

The qualification covers:

- Health and safety in a salon.
- Customer service skills.
- Nail art and care.
- Make-up application.
- Hair styling.

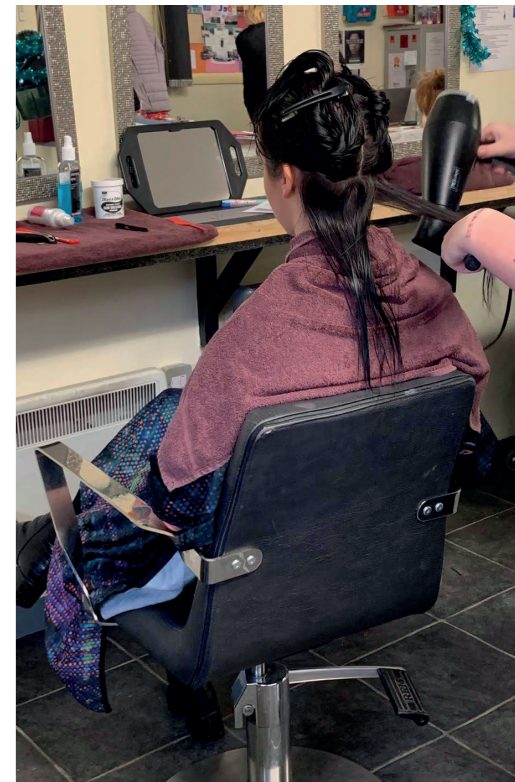
LEVEL 2

This qualification is suitable for learners wishing to pursue a career as a beauty therapist.

Students will gain experience working on models within a range of topics including:

- Health, safety and hygiene.
- Manicure treatments.
- Pedicure treatments.
- Facial treatments.
- Skin type analysis.
- Eyebrow shaping services.
- Make-up application.

Please contact us about other courses and levels if you are interested.



➤ **ENTRY REQUIREMENTS:**

This course is suitable for 14-18 year olds (or up to 25 with an EHCP).

Must have at least Level 1 in English.

Aged 16+ will be supported to achieve maths and English qualifications whilst on the programme (if you have not achieved A-C or 9-4 grade GCSE).

Aged 16+ will be placed within relevant work experience with local employers whilst on the programme.

➤ **ENTRY REQUIREMENTS:**

This course is suitable for 14-18 year olds (or up to 25 with an EHCP).

No recommended prior learning or experience is required.

Aged 16+ will be supported to achieve maths and English qualifications whilst on the programme (if you have not achieved A-C or 9-4 grade GCSE).

Aged 16+ will be placed within relevant work experience with local employers whilst on the programme.



LEVEL 1

Introduction to Health and Social Care



This course allows students to develop their knowledge and skills for working in the health and social care sector.

The qualification covers:

- The role of the social worker.
- Duty of care.
- Safeguarding.
- Health and safety.
- Effective and professional communication.

WHERE WILL IT TAKE ME?

Progress onto further training (e.g. Level 2) or a traineeship/apprenticeship in health care, social care or working with young people.

Please contact us about other courses and levels if you are interested.



LEVEL 1

Automotive Maintenance

This course allows students to develop their knowledge and skills in the motor industry in the motor industry, working on both cars and motorbikes.

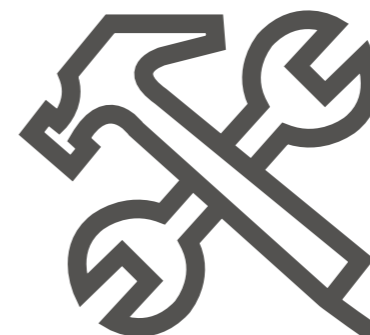
The qualification covers:

- Ignition systems.
- Disc and drum breaking systems.
- Electronic systems.
- Lighting and vehicle diagnostics.

WHERE WILL IT TAKE ME?

Progress onto further training (e.g. Level 2) or a traineeship/apprenticeship in a mechanical environment.

Please contact us about other courses and levels if you are interested.



Thank you to our supporters...



St Eds are fortunate to have access to subcontractors to develop relationships for work experience and apprenticeships through Taylor Wimpey's large global supply chain. They support us with industry expertise and access to current best practise in construction.



Travis Perkins are supporters of St Eds assisting with donations and technical advice as well as providing work experience opportunities to students.



OPI support our Hair and Beauty courses, by donating nail varnishes and other beauty items, which support the students unit development.



Persimmon are a large home builder with sites locally in Norfolk and have strong links to subcontractor supply chains. Persimmon are interested in the progress of young people into construction trades.



Pentaco are a local construction company, who kindly supported us in 2019 by building us a new classroom space, which we now use as our IT room.

"I've been blown away by the passion and commitment of the staff involved with the St Eds outreach service. They have thrown themselves into working alongside my school staff with some of the most difficult to reach young people. By helping these young people get back into education there is no doubt that they change lives."

MR DAVID THOMAS OBE
FORMER HEADTEACHER, INSPIRATION TRUST